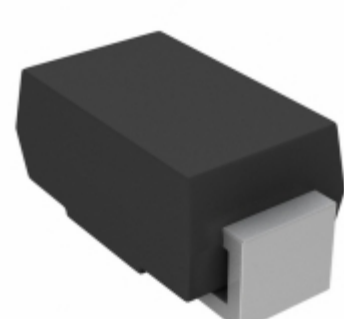


## SMAJ10AHE3/61



**Part Number:** [SMAJ10AHE3/61](#)  
**Manufacturer:** [Electro-Films \(EFI\) / Vishay](#)  
**Description:** TVS DIODE 10V 17V DO214AC  
**Data sheet:** [Packaging Information](#)  
[SMAJ5.0A-SMAJ188CA Series](#)

**RoHS Status:** Lead free / RoHS Compliant  
**Ship From:** Hong Kong  
**Shipment Way:** DHL/Fedex/TNT/UPS/EMS

Images are for reference only.  
 See Product Specifications for product details.  
**Buy SMAJ10AHE3/61 with confidence from Component-World.HK, 1 Year Warranty**

[Request For Quotation](#)

### PRODUCT PARAMETER

<b>Part Number</b>	SMAJ10AHE3/61	<b>Manufacturer</b>	<a href="#">Electro-Films (EFI) / Vishay</a>
<b>Description</b>	TVS DIODE 10V 17V DO214AC	<b>Lead Free Status / RoHS Status</b>	Lead free / RoHS Compliant
<b>Quantity Available</b>	422995 pcs	<b>Data sheet</b>	<a href="#">Packaging Information</a> <a href="#">SMAJ5.0A-SMAJ188CA Series</a>
<b>Category</b>	<a href="#">Circuit Protection</a>	<b>Voltage - Reverse Standoff (Typ)</b>	10V
<b>Voltage - Clamping (Max) @ 1pp</b>	17V	<b>Voltage - Breakdown (Min)</b>	11.1V
<b>Unidirectional Channels</b>	1	<b>Type</b>	Zener
<b>Supplier Device Package</b>	DO-214AC (SMA)	<b>Series</b>	Automotive, AEC-Q101, TransZorb®
<b>Power Line Protection</b>	No	<b>Power - Peak Pulse</b>	400W
<b>Packaging</b>	Tape & Reel (TR)	<b>Package / Case</b>	DO-214AC, SMA
<b>Operating Temperature</b>	-55°C ~ 150°C (TJ)	<b>Mounting Type</b>	Surface Mount
<b>Moisture Sensitivity Level (MSL)</b>	1 (Unlimited)	<b>Manufacturer Standard Lead Time</b>	46 Weeks
<b>Lead Free Status / RoHS Status</b>	Lead free / RoHS Compliant	<b>Current - Peak Pulse (10/1000µs)</b>	23.5A
<b>Capacitance @ Frequency</b>	-	<b>Base Part Number</b>	SMAJ
<b>Applications</b>	Automotive		

Component-World.com is a Reliable Stocking Distributor of Electronic Components. We specialize in all Electro-Films (EFI) / Vishay series electronic components. We have 422995 pieces of Electro-Films (EFI) / Vishay SMAJ10AHE3/61 in stock available now. Request a quote from electronics components distributor at Component-World.com, our sales team will contact you within 24 hours.  
 RFQ Email: [info@Components-World.com](mailto:info@Components-World.com)

### RELATED PRODUCTS

	<b>Part#:</b> <a href="#">SMAJ10A-13-F</a> <b>Description:</b> TVS DIODE 10V 17V SMA	<b>Manufacturers:</b> <a href="#">Diodes Incorporated</a>	<a href="#">RFQ</a>
	<b>Part#:</b> <a href="#">SMAJ10CA M2G</a> <b>Description:</b> TVS DIODE 10V 17V DO214AC	<b>Manufacturers:</b> <a href="#">TSC (Taiwan Semiconductor)</a>	<a href="#">RFQ</a>
	<b>Part#:</b> <a href="#">SMAJ10CA</a> <b>Description:</b> TVS DIODE 10V 17V DO214AC	<b>Manufacturers:</b> <a href="#">Hamlin / Littelfuse</a>	<a href="#">RFQ</a>
	<b>Part#:</b> <a href="#">SMAJ10A-M3/61</a> <b>Description:</b> TVS DIODE 10V 17V DO214AC	<b>Manufacturers:</b> <a href="#">Electro-Films (EFI) / Vishay</a>	<a href="#">RFQ</a>
	<b>Part#:</b> <a href="#">SMAJ10CA</a> <b>Description:</b> TVS DIODE 10V 17V SMA	<b>Manufacturers:</b> <a href="#">Bourns, Inc.</a>	<a href="#">RFQ</a>
	<b>Part#:</b> <a href="#">SMAJ10A-E3/5A</a> <b>Description:</b> TVS DIODE 10V 17V DO214AC	<b>Manufacturers:</b> <a href="#">Electro-Films (EFI) / Vishay</a>	<a href="#">RFQ</a>
	<b>Part#:</b> <a href="#">SMAJ10ATR</a> <b>Description:</b> TVS DIODE 10V 17V SMA	<b>Manufacturers:</b> <a href="#">Sensitron Semiconductor / SMC Diode Solutions</a>	<a href="#">RFQ</a>
	<b>Part#:</b> <a href="#">SMAJ10C-E3/5A</a> <b>Description:</b> TVS DIODE 10V 18.8V DO214AC	<b>Manufacturers:</b> <a href="#">Electro-Films (EFI) / Vishay</a>	<a href="#">RFQ</a>
	<b>Part#:</b> <a href="#">SMAJ10A-E3/61</a> <b>Description:</b> TVS DIODE 10V 17V DO214AC	<b>Manufacturers:</b> <a href="#">Electro-Films (EFI) / Vishay</a>	<a href="#">RFQ</a>
	<b>Part#:</b> <a href="#">SMAJ10A-13</a> <b>Description:</b> TVS DIODE 10V 17V SMA	<b>Manufacturers:</b> <a href="#">Diodes Incorporated</a>	<a href="#">RFQ</a>
	<b>Part#:</b> <a href="#">SMAJ10AE3/TR13</a> <b>Description:</b> TVS DIODE 10V 17V DO214AC	<b>Manufacturers:</b> <a href="#">Microsemi</a>	<a href="#">RFQ</a>
	<b>Part#:</b> <a href="#">SMAJ10CA R3G</a> <b>Description:</b> TVS DIODE 10V 17V DO214AC	<b>Manufacturers:</b> <a href="#">TSC (Taiwan Semiconductor)</a>	<a href="#">RFQ</a>
	<b>Part#:</b> <a href="#">SMAJ10C-E3/61</a> <b>Description:</b> TVS DIODE 10V 18.8V DO214AC	<b>Manufacturers:</b> <a href="#">Electro-Films (EFI) / Vishay</a>	<a href="#">RFQ</a>
	<b>Part#:</b> <a href="#">SMAJ10AHM2G</a> <b>Description:</b> TVS DIODE 10V 17V DO214AC	<b>Manufacturers:</b> <a href="#">TSC (Taiwan Semiconductor)</a>	<a href="#">RFQ</a>
	<b>Part#:</b> <a href="#">SMAJ10A R3G</a> <b>Description:</b> TVS DIODE 10V 17V DO214AC	<b>Manufacturers:</b> <a href="#">TSC (Taiwan Semiconductor)</a>	<a href="#">RFQ</a>
	<b>Part#:</b> <a href="#">SMAJ10AHR3G</a> <b>Description:</b> TVS DIODE 10V 17V DO214AC	<b>Manufacturers:</b> <a href="#">TSC (Taiwan Semiconductor)</a>	<a href="#">RFQ</a>
	<b>Part#:</b> <a href="#">SMAJ10C</a> <b>Description:</b> TVS DIODE 10V 17.85V DO214AC	<b>Manufacturers:</b> <a href="#">Hamlin / Littelfuse</a>	<a href="#">RFQ</a>
	<b>Part#:</b> <a href="#">SMAJ10A-M3/5A</a> <b>Description:</b> TVS DIODE 10V 17V DO214AC	<b>Manufacturers:</b> <a href="#">Electro-Films (EFI) / Vishay</a>	<a href="#">RFQ</a>
	<b>Part#:</b> <a href="#">SMAJ10AHE3/5A</a> <b>Description:</b> TVS DIODE 10V 17V DO214AC	<b>Manufacturers:</b> <a href="#">Electro-Films (EFI) / Vishay</a>	<a href="#">RFQ</a>
	<b>Part#:</b> <a href="#">SMAJ10A-TP</a> <b>Description:</b> TVS DIODE 10V 17V DO214AC	<b>Manufacturers:</b> <a href="#">Micro Commercial Components (MCC)</a>	<a href="#">RFQ</a>

### Related keywords for SMAJ10AHE3/61

<a href="#">Electro-Films (EFI) / Vishay SMAJ10AHE3/61</a>	<a href="#">SMAJ10AHE3/61 distributor</a>	<a href="#">SMAJ10AHE3/61 supplier</a>	<a href="#">SMAJ10AHE3/61 price</a>
<a href="#">SMAJ10AHE3/61 download datasheet</a>	<a href="#">SMAJ10AHE3/61 datasheet</a>	<a href="#">SMAJ10AHE3/61 stock</a>	<a href="#">buy SMAJ10AHE3/61</a>
<a href="#">Electro-Films (EFI) / Vishay SMAJ10AHE3/61</a>	<a href="#">Electro-Films (EFI) / Vishay SMAJ10AHE3/61</a>	<a href="#">Vishay Electro-Films SMAJ10AHE3/61</a>	<a href="#">Phoenix Passive Components / Vishay SMAJ10AHE3/61</a>